



Modulase
MODULAR LASER PROCESS HEAD



Develop, validate & demonstrate a rapidly re-configurable laser process head:

- ✓ Capable of welding, cladding and cutting, through the use of three modular end-effectors
- ✓ Including intelligent sensor technologies for in-process monitoring
- ✓ Linked to an intelligent system, to achieve adaptive process control, quality assurance, and process parameter configuration

The project will focus on materials and geometries for high value manufacturing applications in the power, automotive and aerospace sectors.

PROJECT IMPACT



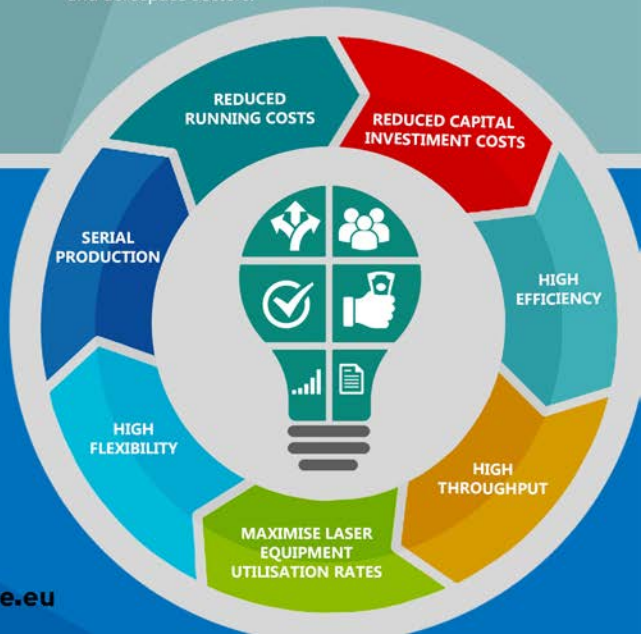
Safe-guarding of existing jobs and the creation of highly skilled employment opportunities in the manufacturing sector within the EU



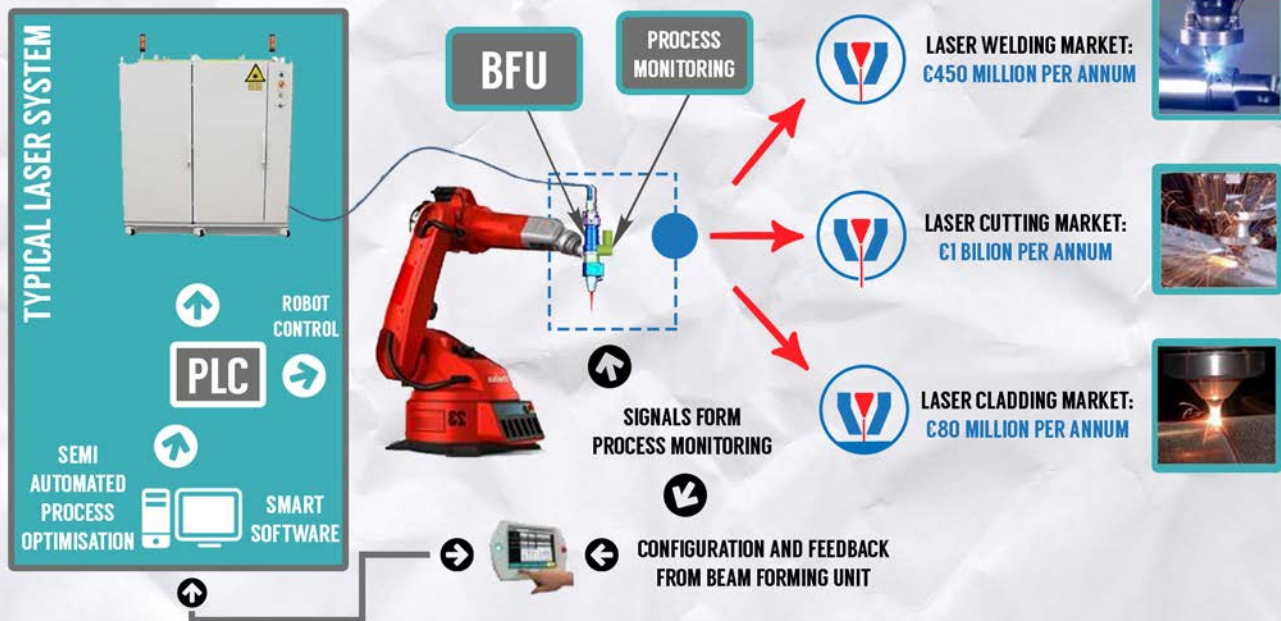
Laser processing is an energy efficient process compared with traditional materials processing techniques and generates significantly less fume



MORE INFO? modulase.eu



CONCEPT SCHEME



PROJECT PARTNERS

